

Interior Design Portfolio

2023

Jacquelyn P Parker

Contents

Jacquelyn P Parker

I. Introduction

Résumé

II. Professional Development and Presentations

Resume1

AAI 280.....3

AAI 282.....4

AAD 466.....9

AAD 450.....16

AAI 374.....21

MANDALAY BAY HD Expo.....30

Jacquelyn P Parker

Las Vegas, NV | 248.890.5572 | parkej15@unlv.nevada.edu

Education

Bachelor of Science in Architecture January 2023
University of Nevada, Las Vegas GPA: 3.47
Interior Architecture, and Design Concentration

Bachelor of Arts: Sociology and Communications
University of Michigan June 1992

Relevant Coursework Projects

Design Professions of Architecture Study

- Creative and innovative design is guided by understanding the complexity of factors relating to human interaction with the designed and natural environments.
- Possess an awareness that architectural design decisions have consequences that impact global habitability, cultural evolution, environmental change, and the sustainability of human societies.
- Learned about Employee Relations, Legal Documentation, Safety, and Case Management

Development of Architectural Concepts

- Understanding architects must have the ability to build abstract relationships and understand the impact of ideas based on research and analysis of multiple theoretical, social, political, economic, cultural, and environmental contexts.
 - The ability to include a facility with a wider range of media used in architecture, including writing, investigative skills, speaking, drawing, and model making.
 - Architects are called upon to comprehend the technical aspects of design, systems, and materials, and must apply comprehension to their services. Additionally, they must appreciate their role in implementing design decisions and the impact such decisions have on the environment.
 - Using Revit, Rhino, and Sketchup software to implement models.
-

Work Experience

Departmental Statistical Analyst

State of Michigan / Department of Labor & Economic Growth October 1999 - 2015

- Statistically analyze employment and salaries for an assigned client base of approximately 3,500 local Michigan government agencies and nonprofit organizations
- Analyzed, audited, and interpreted employment and salary data for quarterly trends for state and federal reports
- Communicated and collaborated with clients to ensure accuracy in reporting data
- Provided quarterly statistical reports to management for salary trend analysis to assist in forecasting
- Audited data for accuracy before submitting data for biannual online publication
- Lead trainer for new employees on state and federal guides lines

Volunteerism

None at this time.

Participation

Las Vegas Design Center, Participant (April 9, 2022)
Interior Design Student Career Day with Laura Fallow (April 9, 2022)

Portfolio Review at The Interior Design Student Career Day

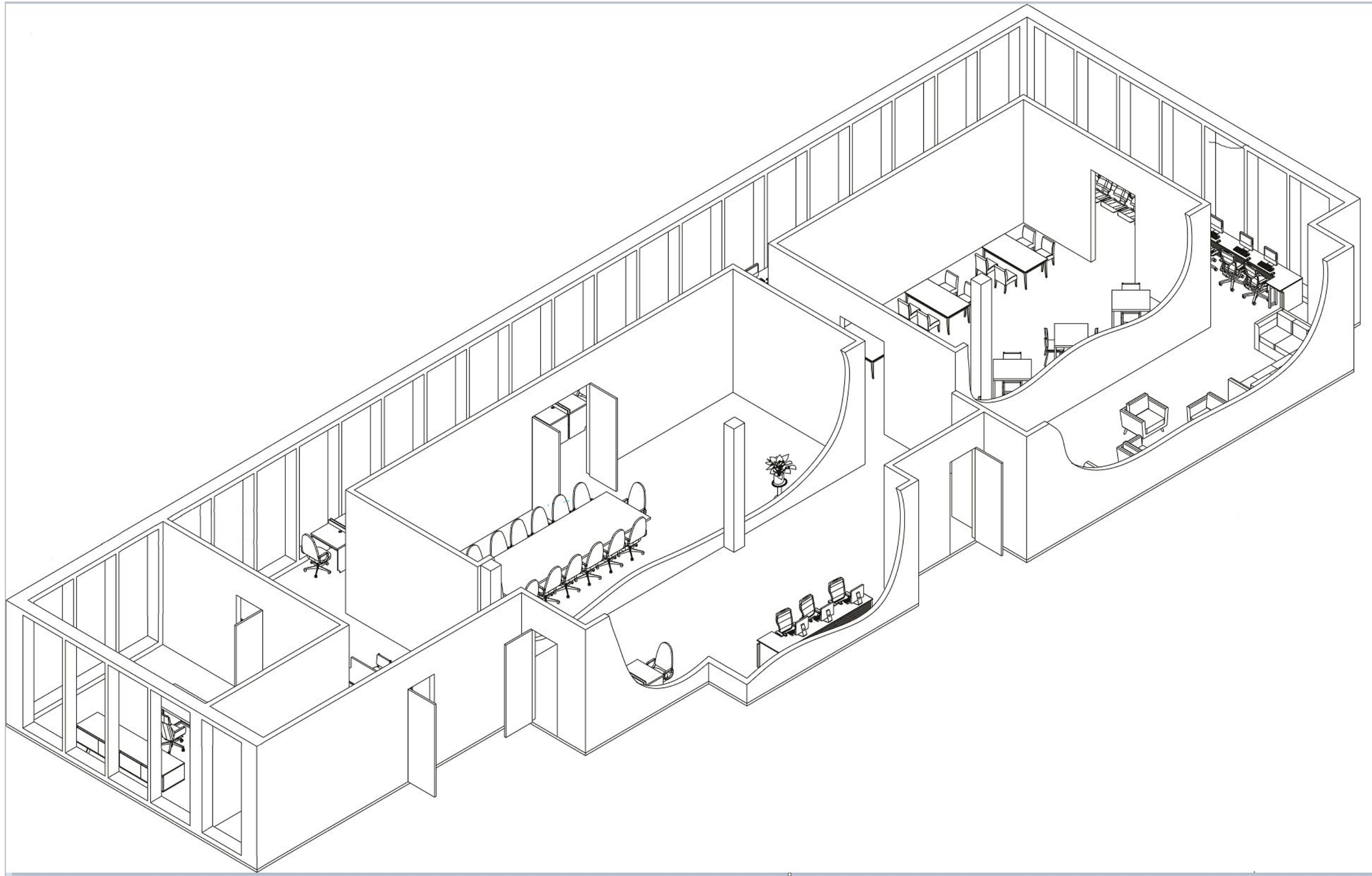
UNLV Art Fair / the College of Fine Arts Art Walk, Participant (Spring 2020)

National Service

Yet to participate outside the State of Nevada.

Professional Organization Membership

ASIS, member, 2021-Present



A
X
O
N
O
M
E
T
R
I
C



Sumptuous Modernity

Cassio

Package Concept

Our goal is to design packaging to highlight the contrast of the chair in the room using color and material effect on the packaging. It displays a modern and stable design that directly reflects the chair itself.



Package Properties

- Cube form.
- White packaging with fuschia metallic accents.
- Front flaps opens to expose chair and allow easy removal from box.
- Chair is held in place by a stabilizer attached to the inside top of package.



Designed Chair and Packaging in Studio
February 2020
AAI 280

Chair design consists of batten and suede materials that is constructed on an aluminum base



Crate Designed and Constructed for Secure Delivery with Detailed Material Information



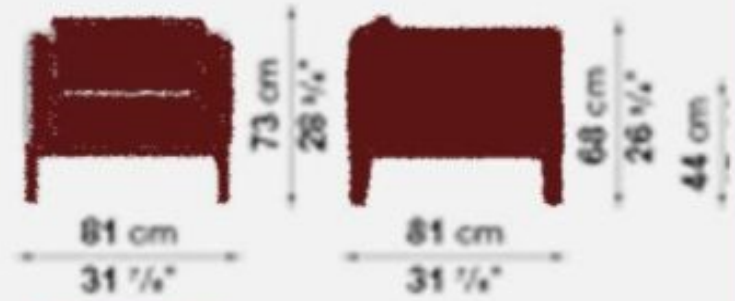
A redesigned shipping container utilizing stronger materials
Constructed in Revit and InDesign

B&B ITALIA

Jean

ARMCHAIRS

Antonio Citterio



Antonio Citterio was born in Meda in 1935, started his design office in 1972 and graduated in architecture at the Milan Polytechnic in 1975. Between 1987 and 1996 he worked in association with Tony Dunne and, together, they designed buildings in Europe and Japan. In 2005, with Patricia Spini, he founded a practice for architecture and interior design, developing international complex long-term projects, at all scales and in synergy with a qualified network of specialist consultants. Antonio Citterio currently works in the industrial design sector with Italian and foreign companies such as Armani, Armani, Aesop, Alessi, B&B Italia, Flexform, Flos, Hermès, Ippolita, Kartell, Maserati, Zanussi (Gestem Group), Technogym and Vitra. In 1987 and in 1994 Antonio Citterio he was awarded the Compasso d'Oro-ADI. Since 2006 he has been full professor of Architectural Design at the Mendrisio Academy of Architecture (Switzerland). In 2008 he was honoured by the Royal Society for the Encouragement of Arts, Manufactures & Commerce of London, which gave him the title of Royal Designer for Industry.



Company Bio
Created Packaging
Revit & Ps
Spring 2021

	DESCRIPTION	COLORS AND FINISHES	SHAPINGS AND CAD	CATALOGUE
Colors		01-02	03-04	05
Frames		06	08	10
		09	11	12
		13	14	15
		16	18	19
		20	21	22
		23	24	25
		26	27	28
		29	30	31
		32	33	34
		35	36	37
		38	39	40
		41	42	43
		44	45	46
		47	48	49
		50	51	52
		53	54	55
		56	57	58
		59	60	61
		62	63	64
		65	66	67
		68	69	70
		71	72	73
		74	75	76
		77	78	79
		80	81	82
		83	84	85
		86	87	88
		89	90	91
		92	93	94
		95	96	97
		98	99	100

B&B
ITALIA

Designed packing to deliver Designer's Chair safely.
I chose a reveal opening because it's easier the the client to open.



Jean
ARMCHAIRS
Antonio Citterio

Jean
Designer: Antonio Citterio
Product: Jean
Collection: Jean
Year: 2014

The Jean seating system, designed by the iconic Italian designer Antonio Citterio, has been selected as the perfect partner in a new collection of products and order of use and to be made.

Technical information
Internal frame: tubular steel with steel padding
Internal frame upholstery: Eptaflex (Eptaflex) fabric with diagonal reinforcement, diagonal reinforcement, pattern Jean seat
Seat cushion upholstery: Eptaflex (Eptaflex) fabric with diagonal reinforcement, diagonal reinforcement, pattern Jean seat
Back cushion upholstery: Eptaflex (Eptaflex) fabric with diagonal reinforcement, diagonal reinforcement, pattern Jean seat
Support frame: high strength in painted steel chrome-plated stainless steel and aluminum
Colors: fabric or leather in various colors

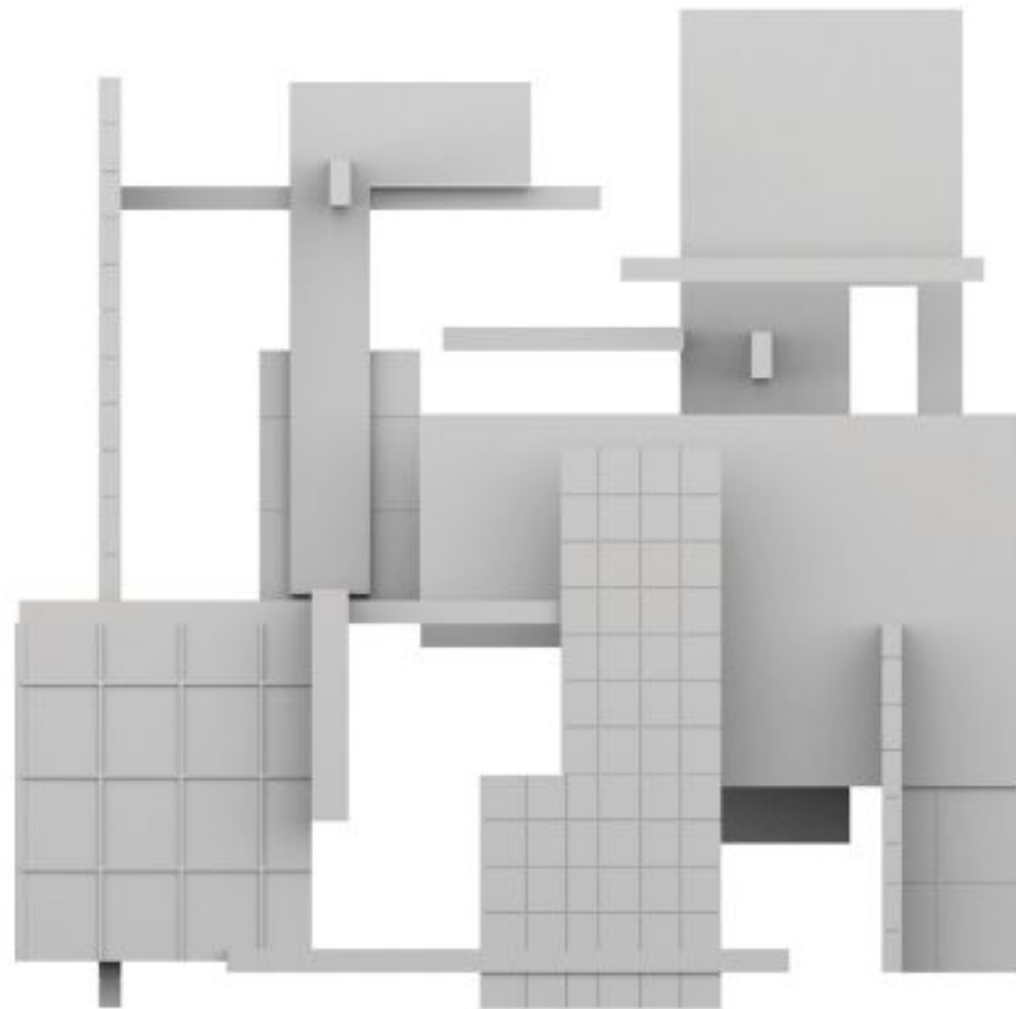
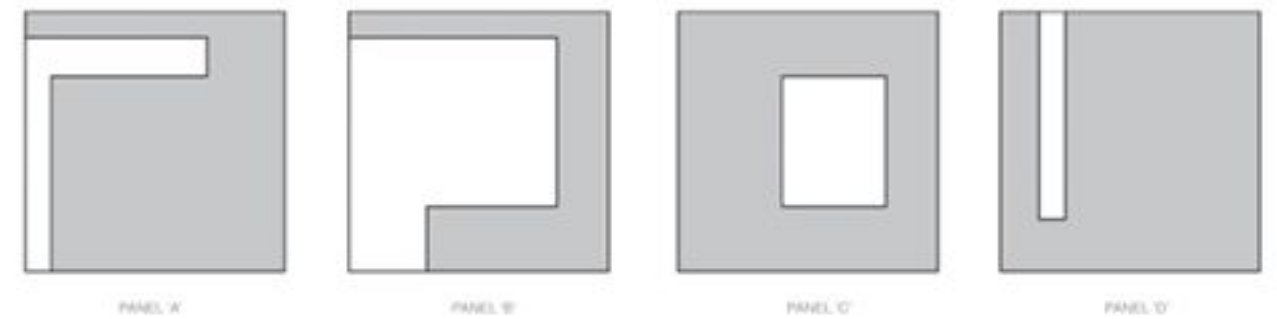
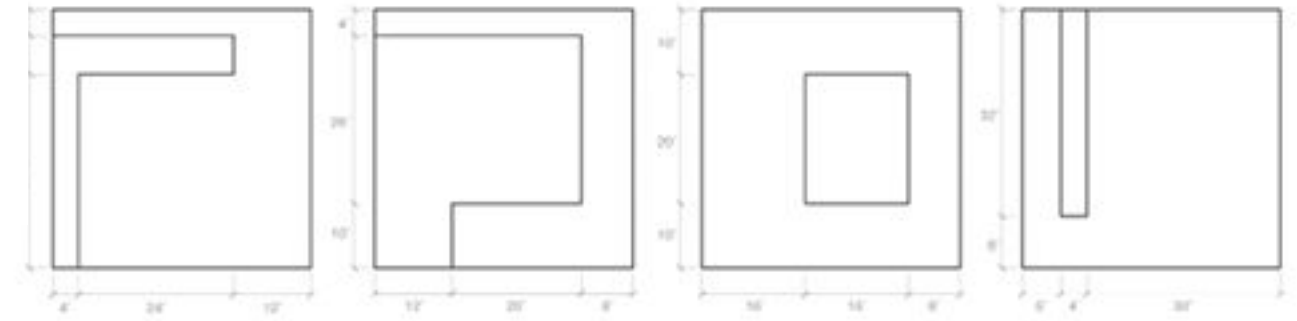
Steel & Wood Crate
Revit & Id
Spring 2021

Steel Wood Crate

Crate Designed and Constructed for Secure Delivery with Detailed Material Information inclosed

Project Series Contents

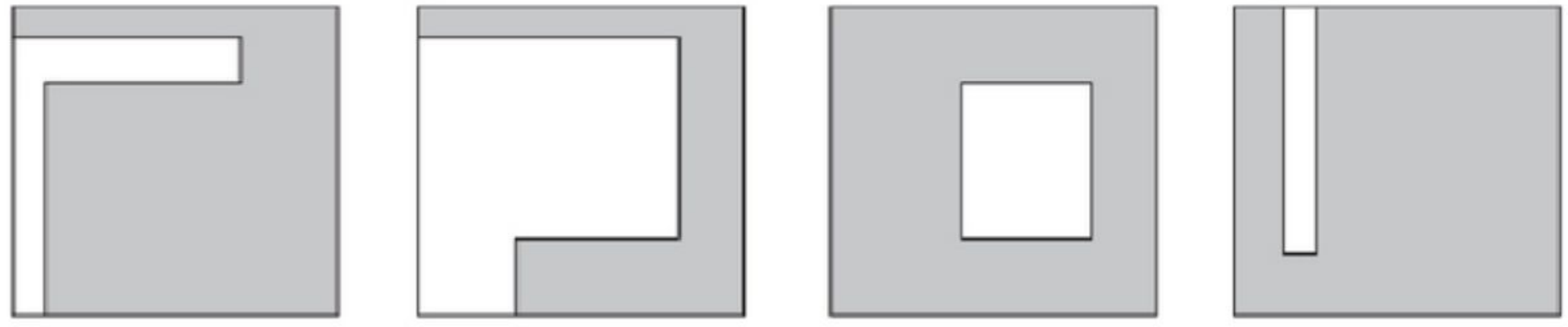
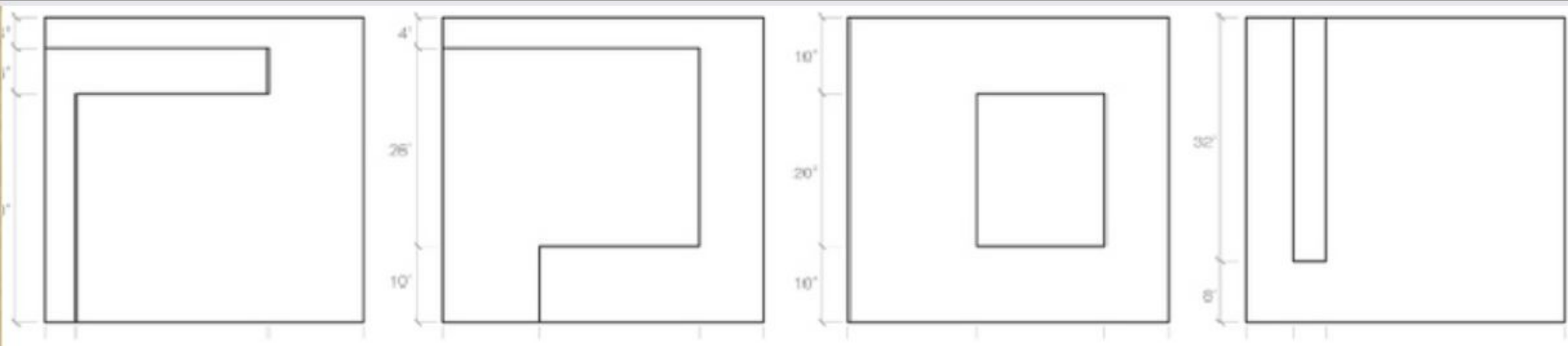
- Module 1: Modeling in Rhino
- Module 2: Modeling in Revit
- Module 3: Plan/ Section in Adobe Illustrator
- Module 4: Modeling in Photoshop



Module 1:

An introductory exercise of model-making spatial organization. By carefully drafting planar model components, precision and craft were utilized to assemble the divisions into provocative and interesting surface compositions. Unique spatial conditions were generated in order to study terms of density, light, or size, which developed spatial intelligence and visual thinking skills.

This project was generated by using Rhinoceros 3d, a 3D modeling software used for design and conceptual massing. Within the program, a familiarization of 3D models, characters, and prototypes with NURBS-based modeling was created as elements such as cruves, surfaces, and solids were introduced in the course. This exercise strengthened the skills necessary to draw curves and model 3D objects, edit their geometry efficiently, and render and export your designs.



PANEL 'A'

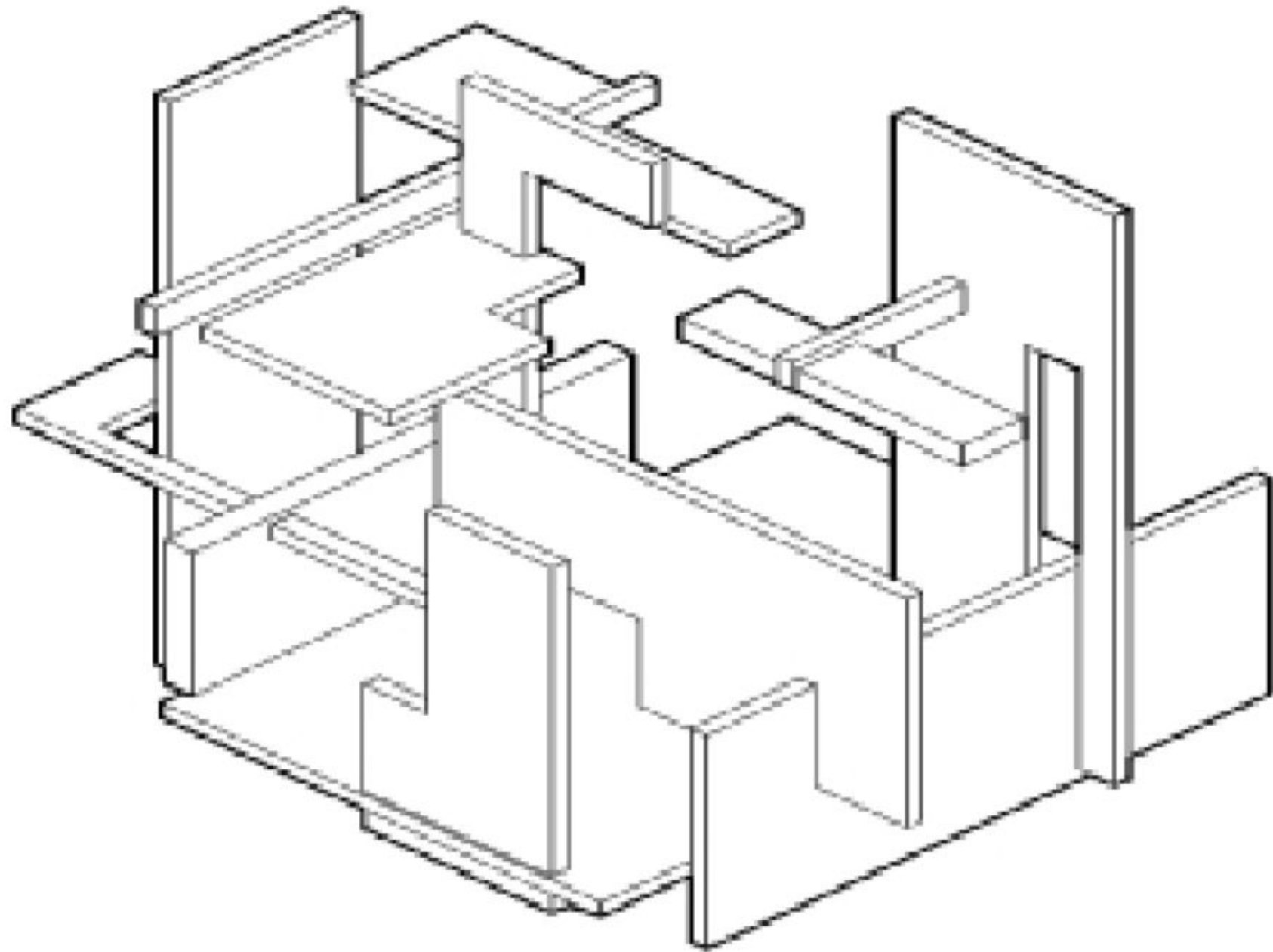
PANEL 'B'

PANEL 'C'

PANEL 'D'

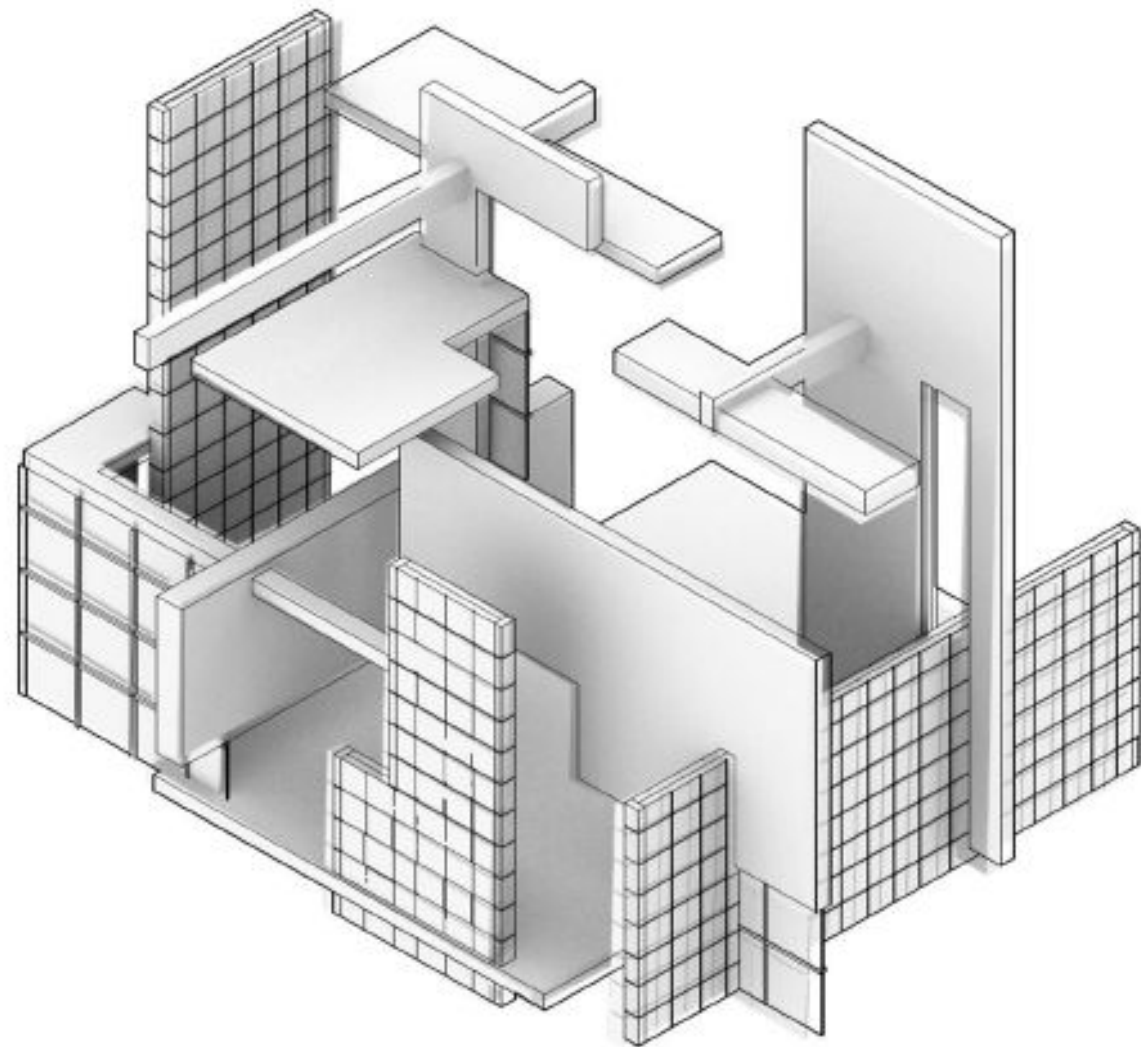
Model 1

An introductory exercise of model-making spatial organization.



Model 1

Working with precision and crafting, carefully drafting and model planar components and assemble them into provocative and interesting surface compositions to generate unique spatial conditions that vary in terms of density, light, or size.



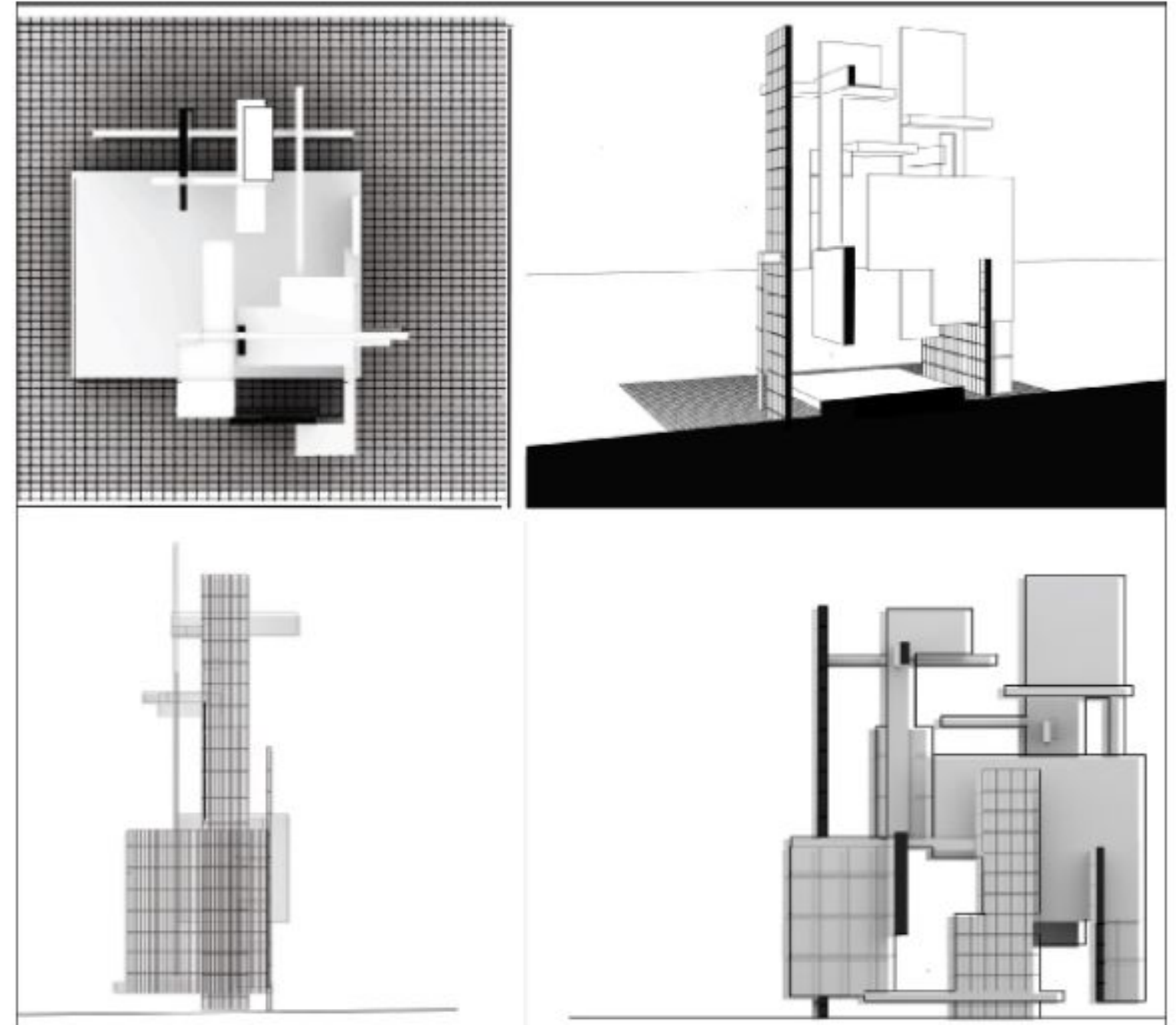
Module 2:

Using the model created in Rhino, a further study by applying material choices to the different planes was achieved in Revit. Revit is the industry standard Building Information Modeling (BIM) software for architecture. Autodesk Revit is building information modeling software for architects, structural engineers, MEP engineers, designers and contractors developed by Autodesk.

The software allows the development of structure and its components in 3D, annotate the model with 2D drafting elements, and access building information from the building model's database. Revit is 3D BIM-capable software with tools to plan and track various stages in the building's lifecycle from concept to construction and later maintenance which may include demolition.

Module 3:

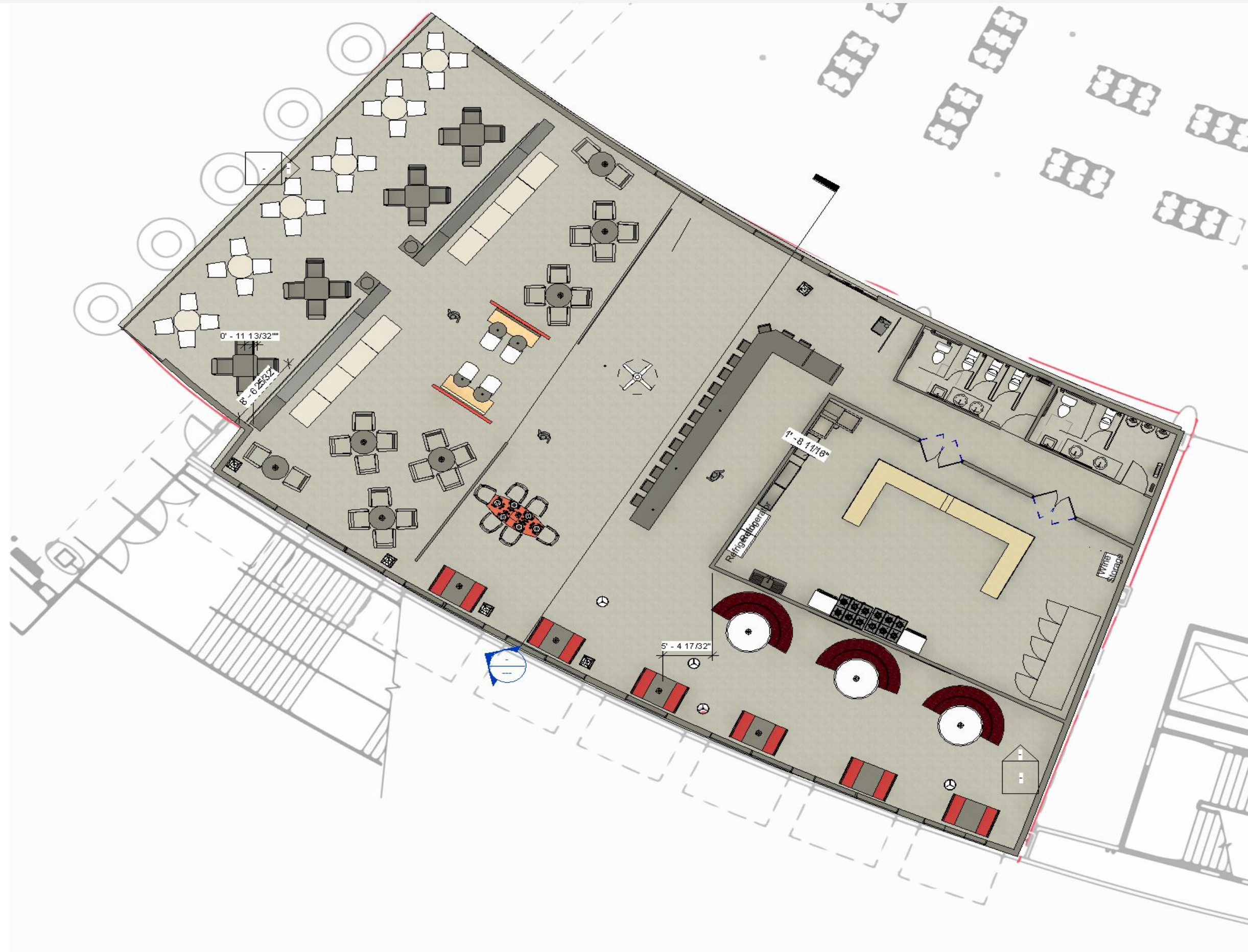
The next step of the process exported the model out of Rhino and into Adobe Illustrator, where linetypes enhanced the plan, section, and elevations of the model. The model was used as an underlay as the thickness of lines were changed within the software. In addition, Adobe Illustrator was used to strengthen a section cut done within Rhino.





Module 4

As a final step, the collage was exported to Adobe Photoshop which allowed enhancement to the section-perspective drawing. Within this process, skills such as layering, shadows, textures, and backgrounds were added into the render process.



Airport Floor Plan





RESTAURANT
PERSPECTIVE







LUXURY DESIGN II

I've interpreted AI Foundation's idea of luxury. The design proposal I have for AI Foundation's design is using office space for visual and remote meetings for communication, global networking, and creativity. Using digital electronics and color transporting into visual art form such as LED lights, glass and colored wall displays as artwork in their gallery that simulate virtual reality.

A combination of ergonomic office furniture, lighting, and color used to create a style that makes them simply unique and color that conveys an image of stability, excitement, and richness, I believe expresses their definition of luxury





AAI 374 | Spring 2023 | FINAL PRESENTATION | Jacquelyn P Parker | Professor Nowak | Scale $\frac{1}{8} = 1'$



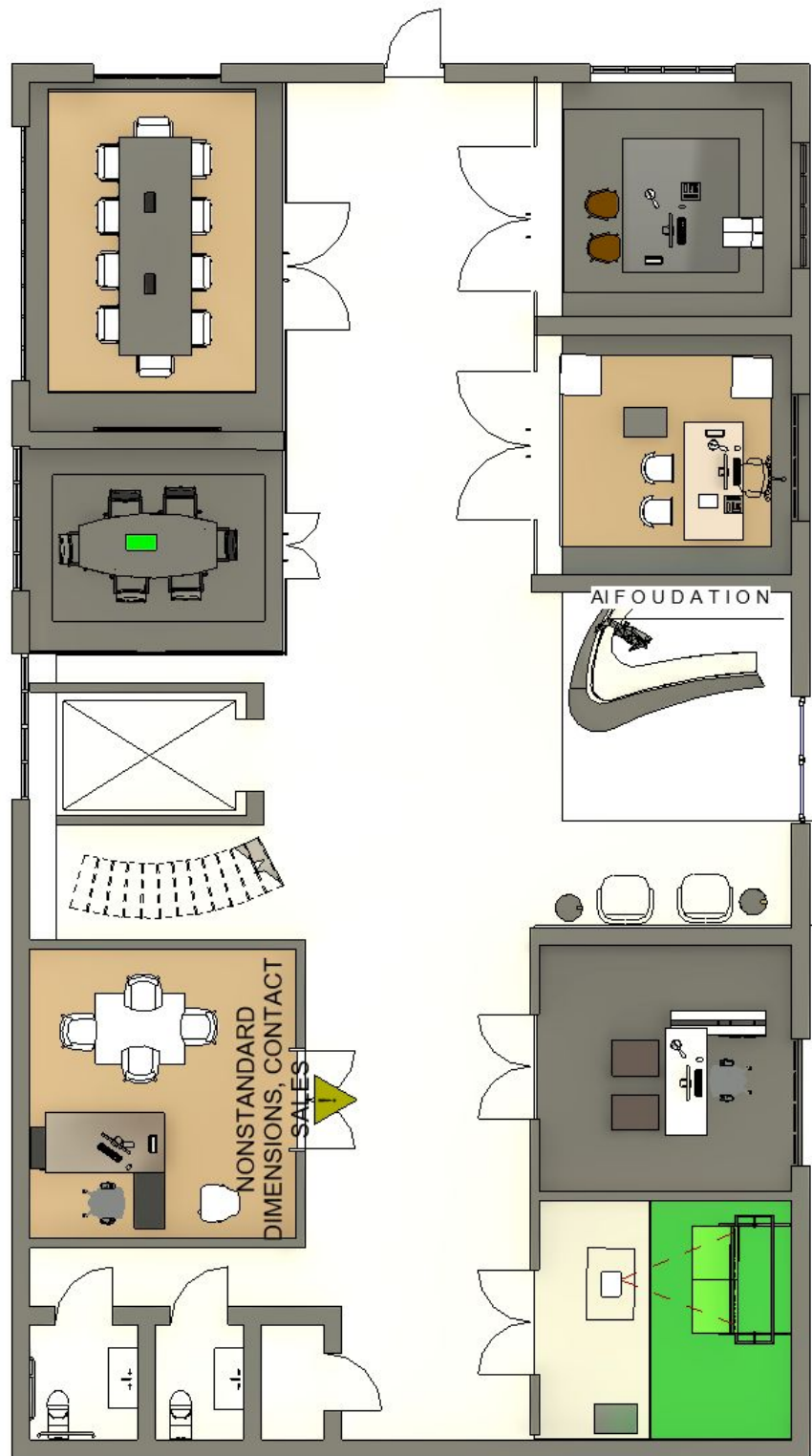






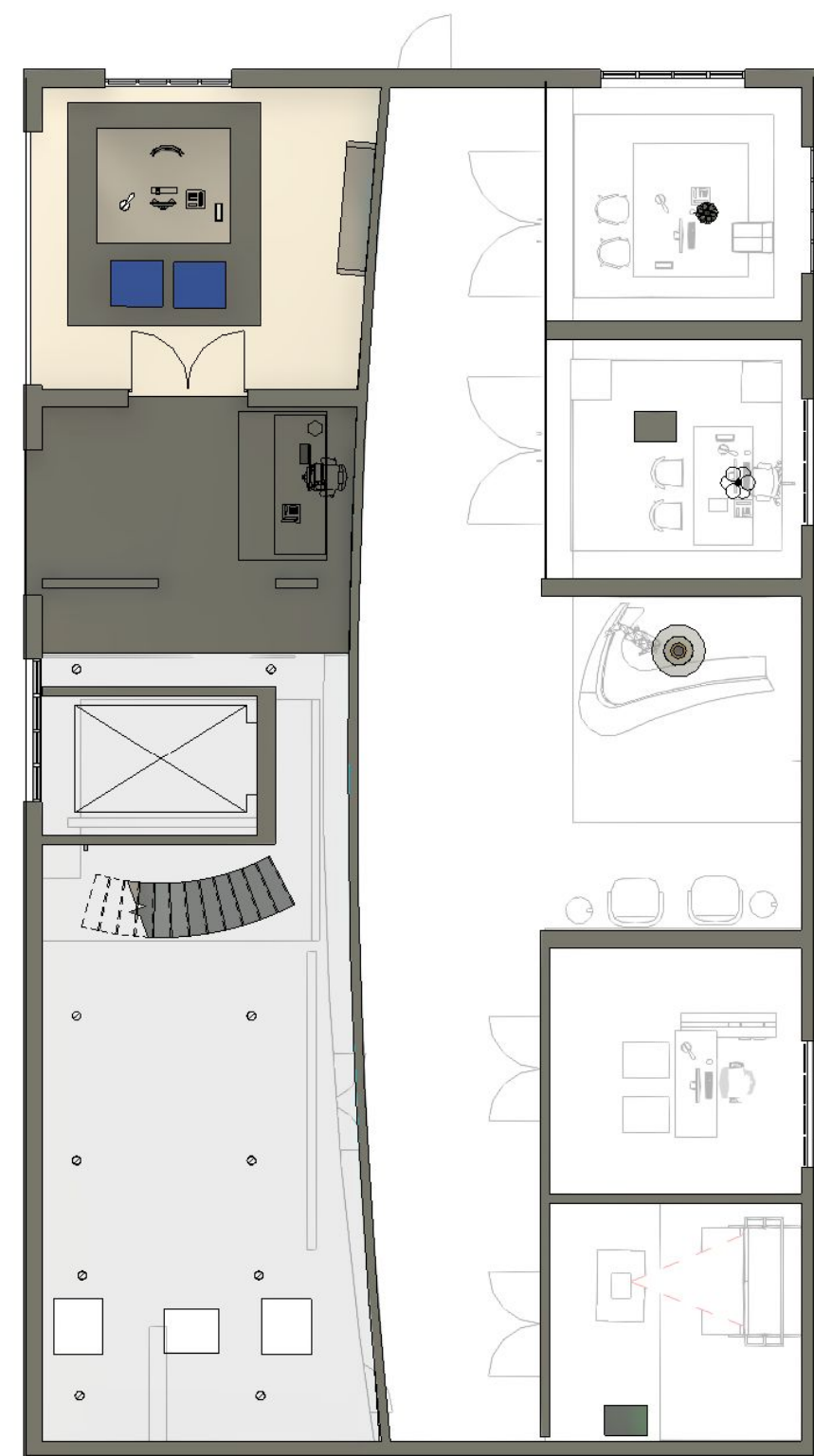


One office, and three ways: How 3 distinct looks completely transformed this one office space.



First Floor
Scale $\frac{1}{4} = 1'$

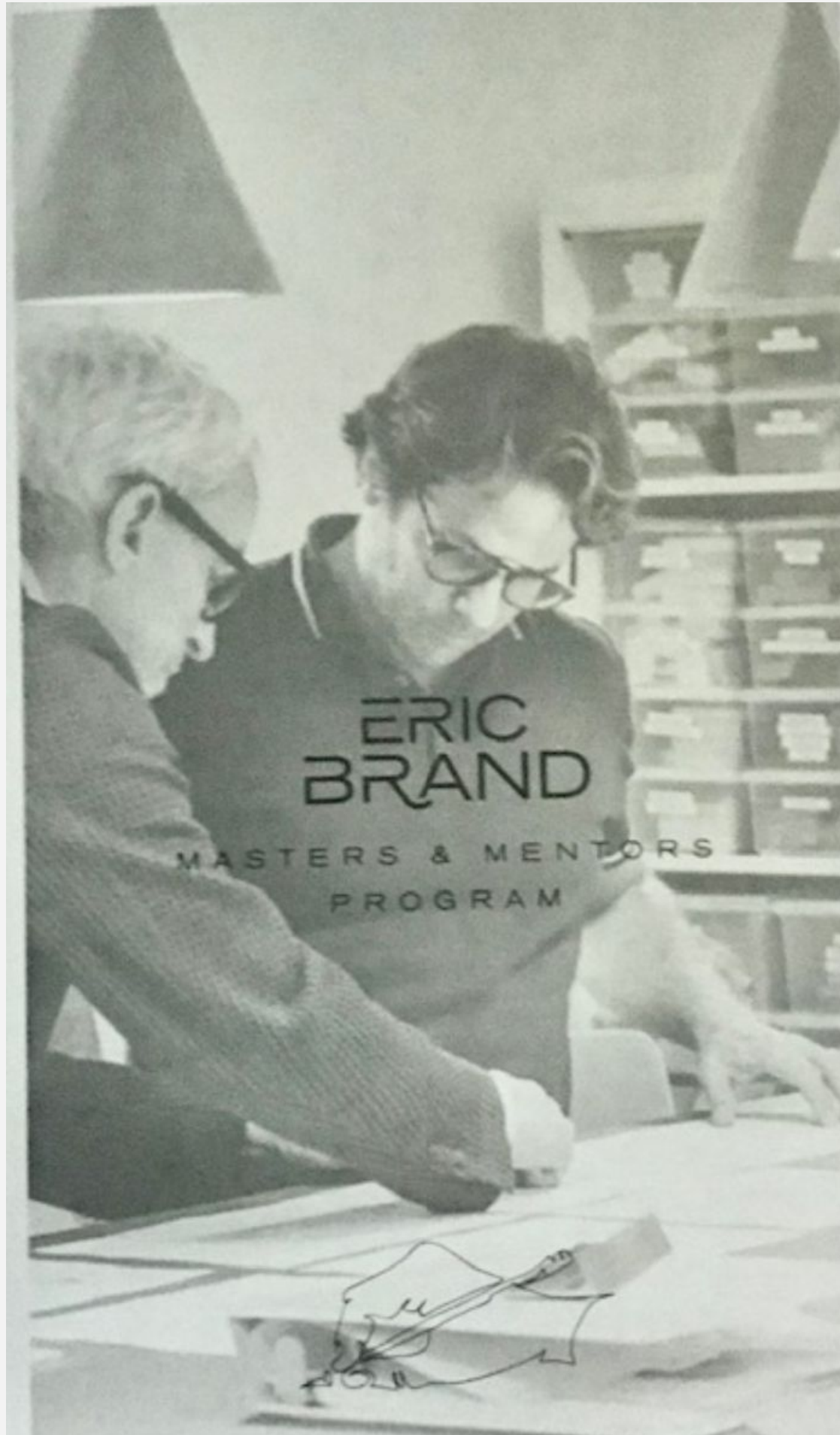
FLOOR PLANS



Mezzanine Level
Scale $\frac{1}{4} = 1'$

MANDALAY BAY HD EXPO 2023

ERIC BRAND PRESENTS SPOTLIGHT ON INTERIOR DESIGN CLASS OF 2023 DESIGNS



STUDENT SPOTLIGHT showcasing at HD Vegas 2023



Jacquelyn P Parker
Interior Design, 3rd Year
"Luxury" Workplace Design

Project Description:
This luxury workplace was designed and created for AI FOUNDATION. The focus is space design conducive to creative ways of communicating on different software platforms.



Samantha Carter
Interior Design, 3rd Year
Hospitality in "Luxury" Corporate Office

Project Description:
A "luxury" corporate office designed for Panasonic's consumer electronics team. The "reset" space aligns with Panasonic's primary goal of improving day-to-day lives. The design of this office is meant to help employees relax during their workday, reduce stress and give every day a sense of purpose.



Stephanie Otero
Interior Architecture and Design, 3rd year
Peerless Av - Luxury Workspace

Project Description:
This is a Luxury Workspace project for Peerless AV. The design was inspired by a virtual reality experience and translated into a parametric wood curve design that replicated organic curves in order to create an illusion and adhere to the company's product in order to introduce technology.

MANDALAY BAY HD EXPO 2023



UNLV
SCHOOL OF
ARCHITECTURE

JACQUELYN P PARKER
INTERIOR DESIGN, 3RD YEAR





Mandalay Bay HD Expo 2023 Exhibit

AAI 374 | Spring 2023 | FINAL PRESENTATION | Jacquelyn P Parker | Professor Nowak | Scale 1/8 = 1'

THANK YOU for YOUR TIME

